

**LOCATION:**

6009/6017 Quinpool Road  
Halifax, NS  
B3K 5J6

**PROPERTY TYPE:**

Commercial/Office

**BUILDING SIZES:**

6009 Quinpool  
Total Space  
49,728 sq. ft.

6017 Quinpool  
Total Space  
8,526 sq. ft.

**SITE SIZE:**

Combined Site Area:  
25,900 sq. ft./0.59 acres

**PARKING:**

140 Spaces

**ZONING:**

6009 Quinpool:  
C-2 (General Business)  
6017 Quinpool: 585

**OWNER:**

APL Properties Limited

**VACANCIES:**

**Suite 701 – 2,120 sf**

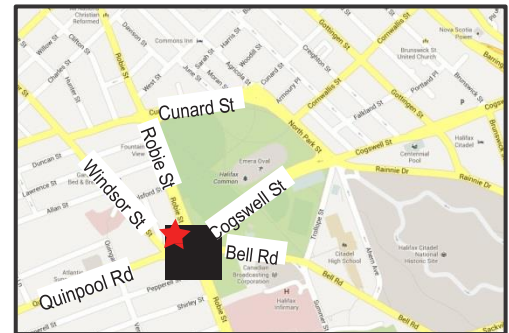
**6017B - 1,605 sf**



### Features/Overview:

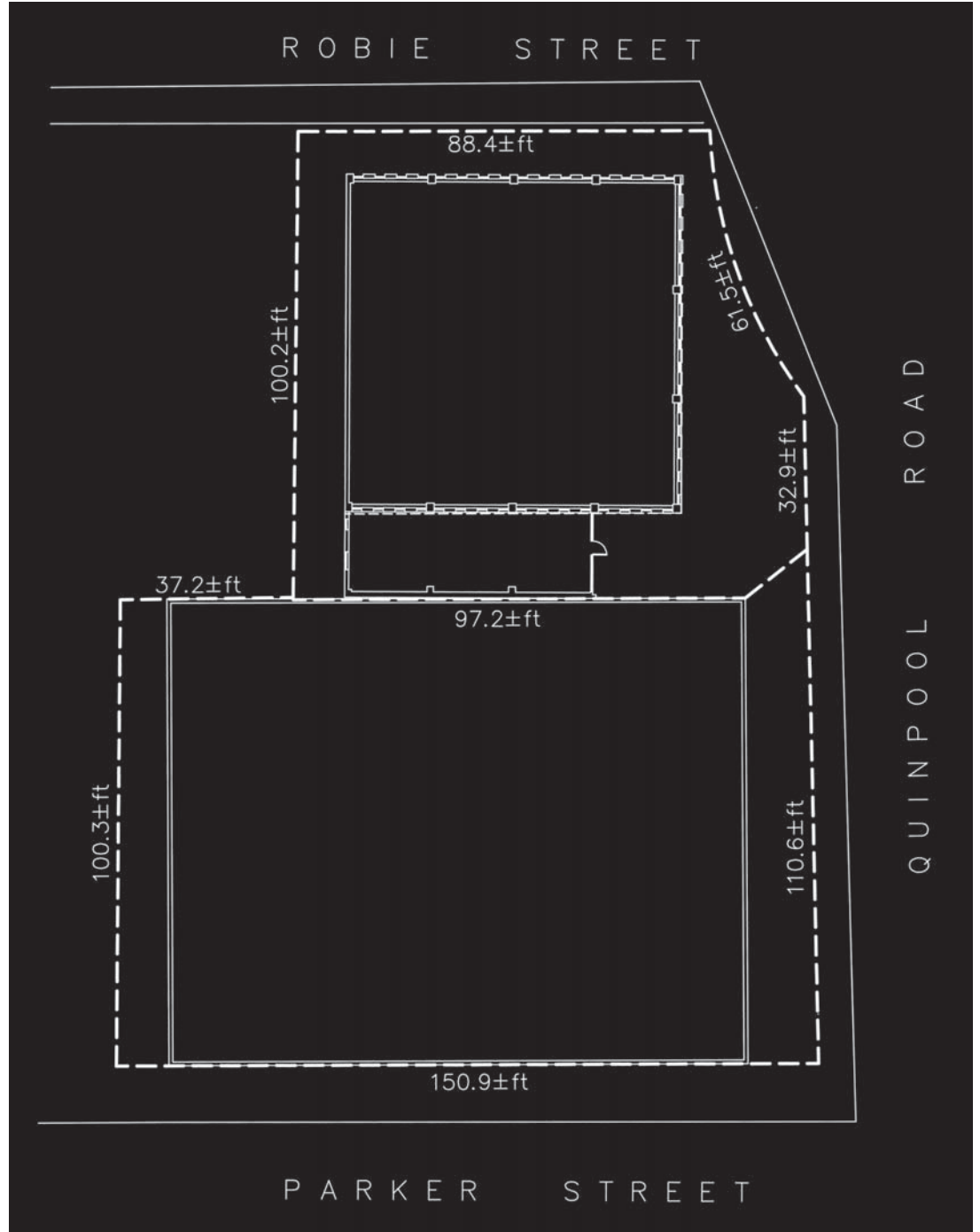
The property is conveniently located on the northwest corner of Robie Street and Quinpool Road at one of the busiest intersections in metropolitan Halifax. This business campus consists of two buildings; one a four storey parkade with ground level commercial/office and storage space and the other a ten storey office tower. The office tower provides spectacular views of the Halifax Commons and Citadel Hill. This is a well established professional commercial complex in a high visibility location with ample parking.

- Located on Quinpool Road at the Willow Tree intersection (Quinpool/Robie)
- On public transit routes
- 25 minutes from the Stanfield International Airport
- Minutes from the Halifax Central Business District



**SITE PLAN**

Total Site: 0.59 acres



**AERIAL PHOTO**

